

Choral Conductors Workshop with Rod Eichenberger

Warm-Up Exercises

Eichenberger/Horstmann

Ne O Ne O Ne O Ne O Ne O Ne O Ne O Ne O Ne O Ne O Ne O Ne O Ne O

8

Zing a por Zing a por Zing Zing Zing Zing a por

10

bel-la bel-la bel-la bel-la don-na pa-pa pa-pa pa-pa pa-pa ghe-na ma-ma ma-ma ma-ma ma-ma mi-a vil-la vil-la vil-la vil-la no-va pri-ma pri-ma pri-ma pri-ma don-na

14

I love to sing! Ha Ya Ya Ya

19

zing zing a ring zing a ring zing a ring zing a ra zing a ra zing a ra zing a ra zing a ra

28

mi ni mi ni mi ni mi ni min min min ma mi ni mi ni mi ni mi ni min min min min ma

32

zing zing zing zing zing zing zing zing za za za za za

35

zing zing zing zing zing zing zing zing za za za za za

38

Nyi a i a Nyi a Nyi a i a Nyi a Nya Nya Nya Nya Nya a Nya a Nya

Crowther's Common Choral Warm-ups

Student Name _____

Purpose _____




oo _____

Purpose _____



Sing ee _____

Purpose _____



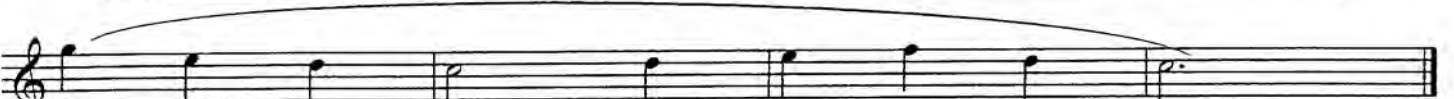
tee ay tee ah tee oh oh oh oh

Purpose _____



oo _____

Purpose _____



oo _____

Purpose _____



oo oh ah

Purpose _____



koo koo koo koo koo oh ah koo koo koo koo koo oh ah koo koo koo koo koo oh ah koo koo koo koo koo oh ah.

Purpose



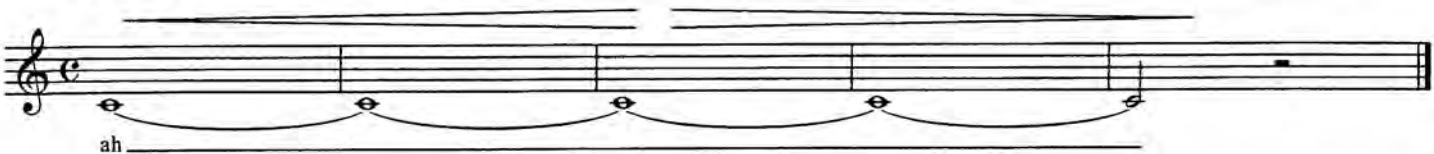
Purpose



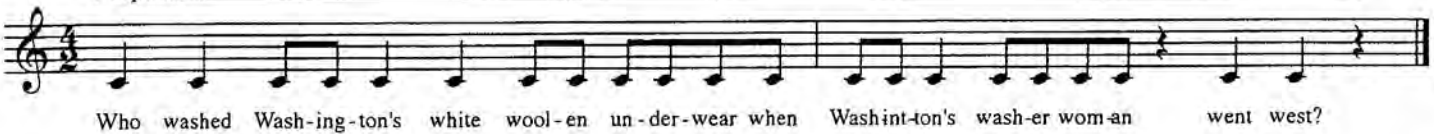
Purpose



Purpose



Purpose



Who washed Wash-ing-ton's white wool-en un-der-wear when Washint-ton's wash-er wom-an went west?

Purpose



A too-ter who tu-tored a flute Once tu-tored two toot-ers to toot. Said the



two to the tu-tor, "Is it eas-i-er to toot or to tu-tor two toot-ers to toot?"

Purpose

bee-ay bay bee-ee bee bee i bick-ky-by bee-oh bo-bic-ky by boh bee-oo boo bic-ky by boh boo.

Purpose

Sing ee _____ sing ay _____ sing

ah _____

Purpose

Clare's	rare	bear	snare	hares.
We	three	felas	need	trees.
Ah!	There's	Pas's	fast	car.
Tom	stopes	Ron's	long	songs.
Do	you	glue	blue	shoes.
Are	there	bees	on	you?

Purpose

pa pa pa pa pa pa pa pa pa pa pa pa pa pa pa pa pa.

Purpose

Ta ta ta ta ta ta ta ta, ta ta ta ta ta ta ta ta, ta ta ta ta ta ta ta ta, ta ta ta ta ta ta ta ta ta.

Purpose _____



Hip hip ho ho ho ho ho ho ho.

Purpose _____



zing a ma ma, sing a ma ma, zing a ma ma zing a ma ma zing zing zing zing

Purpose _____



I love _____ to sing!

Purpose _____



B D F L M N P T V V V V B D F L M N P T V V V V



B D F L M N P T V V V V C O R O N A D O V V V V

Purpose _____



Mah meh mee moh moo. Nah neh nee noh noo.



Purpose _____

noo naw noo naw noo naw noo naw noo naw noo naw noo naw. noo naw.

noo naw

Detailed description: This exercise consists of two staves. The top staff is in treble clef and the bottom staff is in bass clef. The melody is a simple eighth-note scale: C4, D4, E4, F4, G4, A4, B4, A4, G4, F4, E4, D4. The lyrics 'noo naw' are placed under each pair of notes. The final two notes, G4 and F4, are held with a fermata. The bottom staff provides a simple accompaniment of eighth notes: C3, D3, E3, F3, G3, A3, B3, A3, G3, F3, E3, D3.

Purpose _____

brrr _____

Detailed description: This exercise is on a single treble clef staff. It features a continuous eighth-note scale: C4, D4, E4, F4, G4, A4, B4, A4, G4, F4, E4, D4. The lyric 'brrr' is written below the first few notes, with a long horizontal line extending across the rest of the staff.

Purpose _____

ee _____ oh _____ ee.

Detailed description: This exercise is on a single treble clef staff in C major. It features a simple melody: C4 (quarter), D4 (quarter), E4 (quarter), F4 (quarter), G4 (quarter), A4 (quarter), B4 (quarter), A4 (quarter), G4 (quarter), F4 (quarter), E4 (quarter), D4 (quarter). The lyrics 'ee' are under the first four notes, 'oh' under the next four, and 'ee.' under the final note.

Purpose _____

yah ha ha ha ha.

Detailed description: This exercise is on a single treble clef staff in C major. It features a simple melody: C4 (quarter), D4 (quarter), E4 (quarter), F4 (quarter), G4 (quarter), A4 (quarter), B4 (quarter), A4 (quarter), G4 (quarter), F4 (quarter), E4 (quarter), D4 (quarter). The lyrics 'yah' are under the first note, and 'ha' is under each of the following five notes.

Purpose _____

Ah ee ah ee ah ee ah ee ah ee ah ee ah.

Detailed description: This exercise is on a single treble clef staff in C major. It features a simple melody: C4 (quarter), D4 (quarter), E4 (quarter), F4 (quarter), G4 (quarter), A4 (quarter), B4 (quarter), A4 (quarter), G4 (quarter), F4 (quarter), E4 (quarter), D4 (quarter). The lyrics 'Ah ee' are under the first two notes, and 'ah ee' is under each of the following five notes.

Purpose _____

Hung ah _____

Detailed description: This exercise is on a single treble clef staff in C major. It features a simple melody: C4 (quarter), D4 (quarter), E4 (quarter), F4 (quarter), G4 (quarter), A4 (quarter), B4 (quarter), A4 (quarter), G4 (quarter), F4 (quarter), E4 (quarter), D4 (quarter). The lyrics 'Hung' are under the first note, and 'ah' is under the second note, with a long horizontal line extending across the rest of the staff.

Purpose



Ff nn k mm p nn t mm ff nn k mm p nn t mm ff nn

Purpose



Sing a lit-tle, sing a lit-tle, tra la la. Sing a lit-tle, sing a lit-tle, tra la la. Sing a lit-tle, sing a lit-tle, tra la la.



Sing a lit - tle, sing a lit - tle, tra la la. Tra la la la la la la la la la.

Purpose



Bum-ble bee, bum-ble bee, bum-ble bee, bum-ble bee. Bum-ble bee, bum-ble bee, bum-ble bee, bum-ble bee.

Purpose



Su - per bub - ble gum. Su - per du - per bub - ble gum. Su - per du - per dou - ble bub - ble,



su - per du - per dou - ble bub - ble, su - per du - per dou - ble bub - ble gum.

Purpose _____

Yo yo yo yo yo yo yo yo yo yo yo.

Purpose _____

Do re mi fa sol la ti do.

Purpose _____

DEE ah DEE ah DEE ah DEE ah DEE ah DEE ah DEE.

Purpose _____

Man - y mum-bling mice, are mak-ing mer-ry mu-sic in the moon - light. Might - y nice!